

#### FEATURES

- Most efficient CRI95 LED available in the market
- Click system to change lenses and range of frontrings
- LED's are positioned deep into the downlight for reduced glare



## Wave 75 fix LV

Fixed

### SPECIFICATIONS

Beam angle	20°/37°/55°
Color	White 9016 / Black 9005
Fixture material	Housing: Die cast aluminium / Lens: Polycarbonate
CCT	2700K / 3000K / 4000K / 1800-300K
CRI	CRI95 (2700K/ 3000K/ 4000K) & CRI93 (1800-3000K)
IK rate	IK03
IP rate	IP20
Operating temperature	-20°C / +45°C
Safety marks	EN60598
Colour consistency	MacAdam step 3
Warranty	5 years
Safety class	II
Energy class	These products contain a light source of energy efficiency class E (2700K/3000K/4000K)

This luminaire contains built-in LED lamps. There are no exchangeable parts inside the luminaire. EU 874/2012

<sup>1</sup> In applications with a flat roof (f.i. car showrooms) the temperatures may exceed 45°C. Please ask our sales office for a special driver.

#### COLOURS

Available colours:

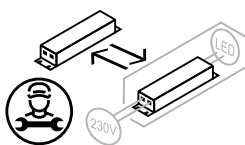


Matt white RAL 9016 (XX=MW)  
Matt black RAL 9005 (XX=BL)

#### SPRINGS

Standard with CS springs (concrete/gyproc).

Also available as below with WS springs (gyproc/metal).



## CRI95 VARIATIONS

Wave 75 fix LV 2700K CRI95 1200/1650Lm page 3

Wave 75 fix LV 3000K CRI95 1200/1650Lm page 4

Wave 75 fix LV 4000K CRI95 1250/1700Lm page 5

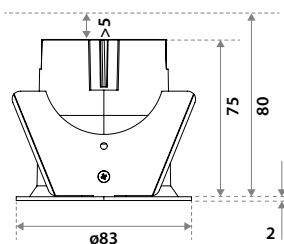
## CRI93 VARIATIONS

Wave 75 fix LV 1800-3000K CRI93 1200Lm page 6

## CHOOSE YOUR LV LUMEN OUTPUT

	mA	W	Lumen Output			Lumen / Watt			UGR			Driver types			
			2700K	3000K	4000K	2700K	3000K	4000K	3000K			No dim	Triac	Dali	Casambi
									24°	37°	55°				
Special request	150	5,6	750	750	775	134	134	138	12.1	12.5	20.8	CC21W150-500	X	CC20W100-800	142047
Special request	200	7,6	975	975	1025	129	129	136	13.0	13.4	21.8	CC21W150-500	X	CC20W100-800	142047
<b>Standard</b>	250	9,6	1200	1200	1250	125	125	131	13.7	14.1	22.5	CC21W150-500	X	CC20W100-800	142047
Special request	300	11,6	1425	1425	1475	123	123	127	14.3	14.7	23.1	CC21W150-500	X	CC20W100-800	142047
Special request	350	13,7	1650	1650	1700	121	121	124	14.8	15.2	23.6	CC21W150-500	EC25CA-EIZHP	CC20W100-800	142047

## DIMENSIONS



## CUT SIZE



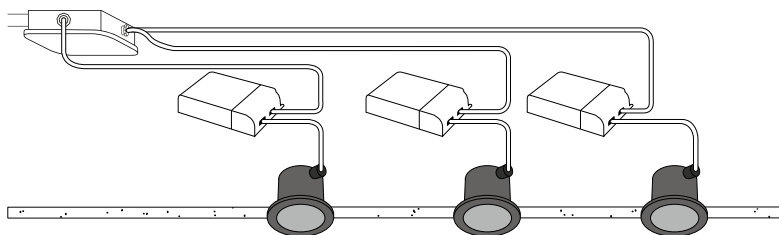
**Using CS springs:** Ø 75-77 mm.  
Thickness ceiling 5-80 mm &  
recess depth 80 mm.



**Using WS springs:** Ø 75-77 mm.  
Thickness ceiling 1-30 mm &  
recess depth 80 mm.

## WAVE 75 FIX LV

Downlight incl. PSU



**2700K CRI95 1200/1650LM**

## ITEM SPECIFICATIONS

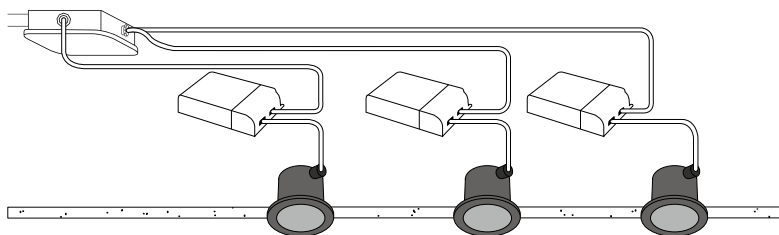
Description	Item code CS	WS	Input	W	Lm	Lm/W	CRI (typ.)	UGR	Pf	Ripple	Inrush current	B-16A Fuse
Wave 75 fix LV 1200Lm 2700K 20° No dim	WV4C03XX2F02	WV4C03XX6V02	220-240V AC/DC	9.6	1200	125	95	13.7	0.85	<3%	21A 180μS	50 pcs
Wave 75 fix LV 1650Lm 2700K 20° Triac	WV4C03XX2I02	WV4C03XX6Y02	220-240V AC/DC	13.7	1650	121	95	14.8	0.95	<9%	8.4A 544μS	85 pcs
Wave 75 fix LV 1200Lm 2700K 20° Dali	WV4C03XX2H02	WV4C03XX6X02	220-240V AC/DC	9.6	1200	125	95	13.7	0.94	<3%	7.5A 16μS	66 pcs
Wave 75 fix LV 1200Lm 2700K 20° Casambi	WV4C03XX2G02	WV4C03XX6W02	220-240V AC/DC	9.6	1200	125	95	13.7	0.95	<3%	5A 50μS	50 pcs
Wave 75 fix LV 1200Lm 2700K 37° No dim	WV4C03XX1G02	WV4C03XX1V02	220-240V AC/DC	9.6	1200	125	95	14.1	0.85	<3%	21A 180μS	50 pcs
Wave 75 fix LV 1650Lm 2700K 37° Triac	WV4C03XX1K02	WV4C03XX1Y02	220-240V AC/DC	13.7	1650	121	95	15.2	0.95	<9%	8.4A 544μS	85 pcs
Wave 75 fix LV 1200Lm 2700K 37° Dali	WV4C03XX1I02	WV4C03XX1X02	220-240V AC/DC	9.6	1200	125	95	14.1	0.94	<3%	7.5A 16μS	66 pcs
Wave 75 fix LV 1200Lm 2700K 37° Casambi	WV4C03XX1H02	WV4C03XX1W02	220-240V AC/DC	9.6	1200	125	95	14.1	0.95	<3%	5A 50μS	50 pcs
Wave 75 fix LV 1200Lm 2700K 55° No dim	WV4C03XXFP02	WV4C03XXF602	220-240V AC/DC	9.6	1200	125	95	22.5	0.85	<3%	21A 180μS	50 pcs
Wave 75 fix LV 1650Lm 2700K 55° Triac	WV4C03XXFS02	WV4C03XXF902	220-240V AC/DC	13.7	1650	121	95	23.6	0.95	<9%	8.4A 544μS	85 pcs
Wave 75 fix LV 1200Lm 2700K 55° Dali	WV4C03XXFR02	WV4C03XXF802	220-240V AC/DC	9.6	1200	125	95	22.5	0.94	<3%	7.5A 16μS	66 pcs
Wave 75 fix LV 1200Lm 2700K 55° Casambi	WV4C03XXFG02	WV4C03XXF702	220-240V AC/DC	9.6	1200	125	95	22.5	0.95	<3%	5A 50μS	50 pcs

Description	Safety class	Energy class	Weight	Dimensions carton	Quantity per carton	Expected Lifetime			Reported Lifetime*		
						L70B10	L80B10	L90B10	L70B10	L80B10	L90B10
Wave 75 fix LV 2700K	II	E	410 gr	160x107x107 mm	18 pcs	621.000 hrs	372.000 hrs	150.000 hrs	>105.000 hrs	>105.000 hrs	105.000 hrs

All values are measured at 230V (+/- 7%). \*Based on 19.000 hrs of LM80 testing at 1440 mA and a Tc85°C

## WAVE 75 FIX LV

Downlight incl. PSU



**3000K CRI95 1200/1650LM**

## ITEM SPECIFICATIONS

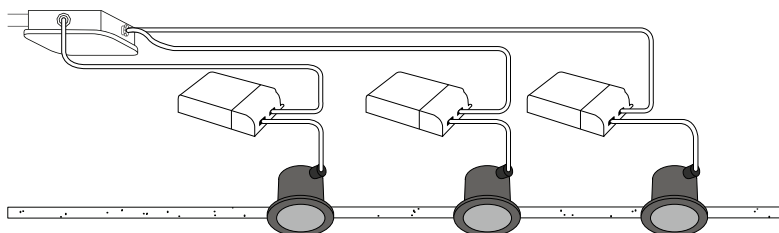
Description	Item code CS	WS	Input	W	Lm	Lm/W	CRI (typ.)	UGR	Pf	Ripple	Inrush current	B-16A Fuse
Wave 75 fix LV 1200Lm 3000K 20° No dim	WV4D03XX2F02	WV4D03XX6V02	220-240V AC/DC	9.6	1200	125	95	13.7	0.85	<3%	21A 180μS	50 pcs
Wave 75 fix LV 1650Lm 3000K 20° Triac	WV4D03XX2I02	WV4D03XX6Y02	220-240V AC/DC	13.7	1650	121	95	14.8	0.95	<9%	8.4A 544μS	85 pcs
Wave 75 fix LV 1200Lm 3000K 20° Dali	WV4D03XX2H02	WV4D03XX6X02	220-240V AC/DC	9.6	1200	125	95	13.7	0.94	<3%	7.5A 16μS	66 pcs
Wave 75 fix LV 1200Lm 3000K 20° Casambi	WV4D03XX2G02	WV4D03XX6W02	220-240V AC/DC	9.6	1200	125	95	13.7	0.95	<3%	5A 50μS	50 pcs
Wave 75 fix LV 1200Lm 3000K 37° No dim	WV4D03XX1G02	WV4D03XX1V02	220-240V AC/DC	9.6	1200	125	95	14.1	0.85	<3%	21A 180μS	50 pcs
Wave 75 fix LV 1650Lm 3000K 37° Triac	WV4D03XX1K02	WV4D03XX1Y02	220-240V AC/DC	13.7	1650	121	95	15.2	0.95	<9%	8.4A 544μS	85 pcs
Wave 75 fix LV 1200Lm 3000K 37° Dali	WV4D03XX1I02	WV4D03XX1X02	220-240V AC/DC	9.6	1200	125	95	14.1	0.94	<3%	7.5A 16μS	66 pcs
Wave 75 fix LV 1200Lm 3000K 37° Casambi	WV4D03XX1H02	WV4D03XX1W02	220-240V AC/DC	9.6	1200	125	95	14.1	0.95	<3%	5A 50μS	50 pcs
Wave 75 fix LV 1200Lm 3000K 55° No dim	WV4D03XXFP02	WV4D03XXF602	220-240V AC/DC	9.6	1200	125	95	22.5	0.85	<3%	21A 180μS	50 pcs
Wave 75 fix LV 1650Lm 3000K 55° Triac	WV4D03XXFS02	WV4D03XXF902	220-240V AC/DC	13.7	1650	121	95	23.6	0.95	<9%	8.4A 544μS	85 pcs
Wave 75 fix LV 1200Lm 3000K 55° Dali	WV4D03XXFR02	WV4D03XXF802	220-240V AC/DC	9.6	1200	125	95	22.5	0.94	<3%	7.5A 16μS	66 pcs
Wave 75 fix LV 1200Lm 3000K 55° Casambi	WV4D03XXFG02	WV4D03XXF702	220-240V AC/DC	9.6	1200	125	95	22.5	0.95	<3%	5A 50μS	50 pcs

Description	Safety class	Energy class	Weight	Dimensions carton	Quantity per carton	Expected Lifetime			Reported Lifetime*		
						L70B10	L80B10	L90B10	L70B10	L80B10	L90B10
Wave 75 fix LV 3000K	II	E	410 gr	160x107x107 mm	18 pcs	621.000 hrs	372.000 hrs	150.000 hrs	>105.000 hrs	>105.000 hrs	105.000 hrs

All values are measured at 230V (+/- 7%). \*Based on 19.000 hrs of LM80 testing at 1440 mA and a Tc85°C

## WAVE 75 FIX LV

Downlight incl. PSU



**4000K CRI95 1250/1700LM**

## ITEM SPECIFICATIONS

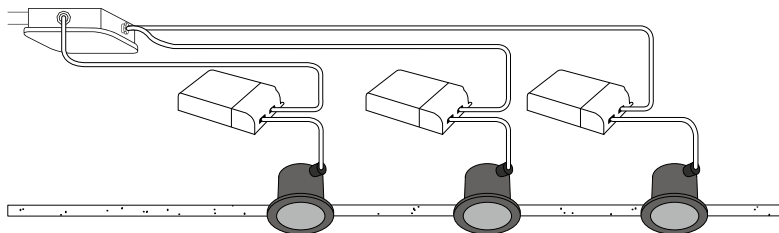
Description	Item code CS	WS	Input	W	Lm	Lm/W	CRI (typ.)	UGR	Pf	Ripple	Inrush current	B-16A Fuse
Wave 75 fix LV 1250Lm 4000K 20° No dim	WV4E03XX2F02	WV4E03XX6V02	220-240V AC/DC	9.6	1250	131	95	13.9	0.85	<3%	21A 180μS	50 pcs
Wave 75 fix LV 1700Lm 4000K 20° Triac	WV4E03XX2J02	WV4E03XX6Y02	220-240V AC/DC	13.7	1700	124	95	14.9	0.95	<9%	8.4A 544μS	85 pcs
Wave 75 fix LV 1250Lm 4000K 20° Dali	WV4E03XX2H02	WV4E03XX6X02	220-240V AC/DC	9.6	1250	131	95	13.9	0.94	<3%	7.5A 16μS	66 pcs
Wave 75 fix LV 1250Lm 4000K 20° Casambi	WV4E03XX2G02	WV4E03XX6W02	220-240V AC/DC	9.6	1250	131	95	13.9	0.95	<3%	5A 50μS	50 pcs
Wave 75 fix LV 1250Lm 4000K 37° No dim	WV4E03XX1G02	WV4E03XX1V02	220-240V AC/DC	9.6	1250	131	95	14.2	0.85	<3%	21A 180μS	50 pcs
Wave 75 fix LV 1700Lm 4000K 37° Triac	WV4E03XX1K02	WV4E03XX1Y02	220-240V AC/DC	13.7	1700	124	95	15.3	0.95	<9%	8.4A 544μS	85 pcs
Wave 75 fix LV 1250Lm 4000K 37° Dali	WV4E03XX1J02	WV4E03XX1W02	220-240V AC/DC	9.6	1250	131	95	14.2	0.94	<3%	7.5A 16μS	66 pcs
Wave 75 fix LV 1250Lm 4000K 37° Casambi	WV4E03XX1H02	WV4E03XX1W02	220-240V AC/DC	9.6	1250	131	95	14.2	0.95	<3%	5A 50μS	50 pcs
Wave 75 fix LV 1250Lm 4000K 55° No dim	WV4E03XXFP02	WV4E03XXF602	220-240V AC/DC	9.6	1250	131	95	22.6	0.85	<3%	21A 180μS	50 pcs
Wave 75 fix LV 1700Lm 4000K 55° Triac	WV4E03XXFS02	WV4E03XXF902	220-240V AC/DC	13.7	1700	124	95	23.7	0.95	<9%	8.4A 544μS	85 pcs
Wave 75 fix LV 1250Lm 4000K 55° Dali	WV4E03XXFR02	WV4E03XXF802	220-240V AC/DC	9.6	1250	131	95	22.6	0.94	<3%	7.5A 16μS	66 pcs
Wave 75 fix LV 1250Lm 4000K 55° Casambi	WV4E03XXFQ02	WV4E03XXF702	220-240V AC/DC	9.6	1250	131	95	22.6	0.95	<3%	5A 50μS	50 pcs

Description	Safety class	Energy class	Weight	Dimensions carton	Quantity per carton	Expected Lifetime			Reported Lifetime*		
						L70B10	L80B10	L90B10	L70B10	L80B10	L90B10
Wave 75 fix LV 4000K	II	E	410 gr	160x107x107 mm	18 pcs	621.000 hrs	372.000 hrs	150.000 hrs	>105.000 hrs	>105.000 hrs	105.000 hrs

All values are measured at 230V (+/- 7%). \*Based on 19.000 hrs of LM80 testing at 1440 mA and a Tc85°C

## WAVE 75 FIX LV

Downlight incl. PSU



1800-3000K CRI95 1200LM

## ITEM SPECIFICATIONS

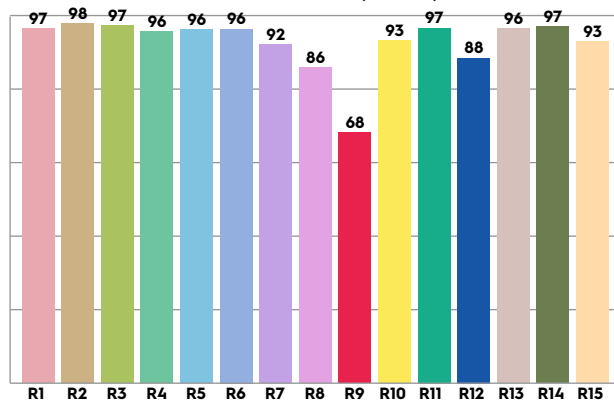
Description	Item code CS	WS	Input	W	Lm	Lm/W	CRI (typ.)	UGR	Pf	Ripple	Inrush current	B-16A Fuse
Wave 75 fix LV 1200Lm 1800-3000K 20° Triac	WV4F03XX2J02	WV4F03XX6Y02	220-240V AC/DC	14.1	1200	85	93	13.7	0.95	<9%	8.4A 544μS	85 pcs
Wave 75 fix LV 1200Lm 1800-3000K 20° Dali	WV4F03XX2H02	WV4F03XX6X02	220-240V AC/DC	14.1	1200	85	93	13.7	0.94	<3%	7.5A 16μS	66 pcs
Wave 75 fix LV 1200Lm 1800-3000K 20° Casambi	WV4F03XX2G02	WV4F03XX6W02	220-240V AC/DC	14.1	1200	85	93	13.7	0.95	<3%	5A 50μS	50 pcs
Wave 75 fix LV 1200Lm 1800-3000K 37° Triac	WV4F03XX1K02	WV4F03XX1Y02	220-240V AC/DC	14.1	1200	85	93	14.1	0.95	<9%	8.4A 544μS	85 pcs
Wave 75 fix LV 1200Lm 1800-3000K 37° Dali	WV4F03XX1J02	WV4F03XX1X02	220-240V AC/DC	14.1	1200	85	93	14.1	0.94	<3%	7.5A 16μS	66 pcs
Wave 75 fix LV 1200Lm 1800-3000K 37° Casambi	WV4F03XX1H02	WV4F03XX1W02	220-240V AC/DC	14.1	1200	85	93	14.1	0.95	<3%	5A 50μS	50 pcs
Wave 75 fix LV 1200Lm 1800-3000K 55° Triac	WV4F03XXFS02	WV4F03XXF902	220-240V AC/DC	14.1	1200	85	93	22.5	0.95	<9%	8.4A 544μS	85 pcs
Wave 75 fix LV 1200Lm 1800-3000K 55° Dali	WV4F03XXFR02	WV4F03XXF802	220-240V AC/DC	14.1	1200	85	93	22.5	0.94	<3%	7.5A 16μS	66 pcs
Wave 75 fix LV 1200Lm 1800-3000K 55° Casambi	WV4F03XXFQ02	WV4F03XXF702	220-240V AC/DC	14.1	1200	85	93	22.5	0.95	<3%	5A 50μS	50 pcs

Description	Safety class	Energy class	Weight carton	Dimensions carton	Quantity per carton	Expected Lifetime			Reported Lifetime*		
						L70B10	L80B10	L90B10	L70B10	L80B10	L90B10
Wave 75 fix LV 1800-3000K	II	E	410 gr	160x107x107 mm	18 pcs	621.000 hrs	372.000 hrs	150.000 hrs	>105.000 hrs	>105.000 hrs	105.000 hrs

All values are measured at 230V (+/- 7%). \*Based on 19.000 hrs of LM80 testing at 1440 mA and a Tc85°C

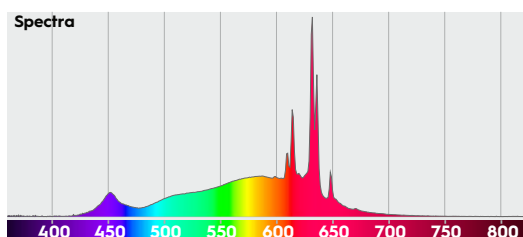
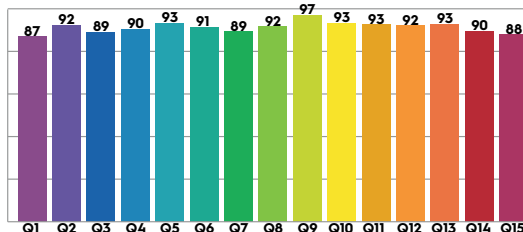
## 2700K

CRI: 94.7 (R1-R8)



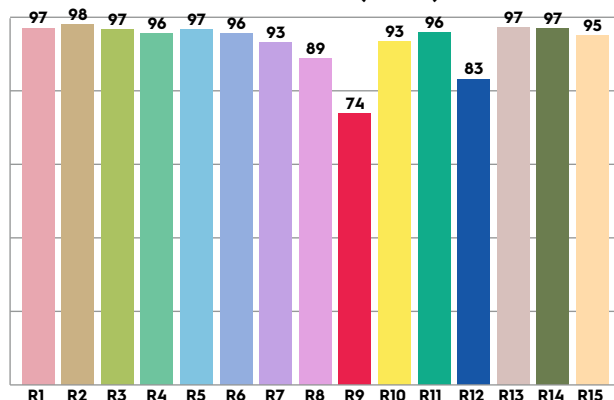
CCT	CRI	CRI R9	TM30 Rf	TM30 Rg	CQS
2728 K	94.7	68.2	91.4	101.4	90.9

CQS: 90.9



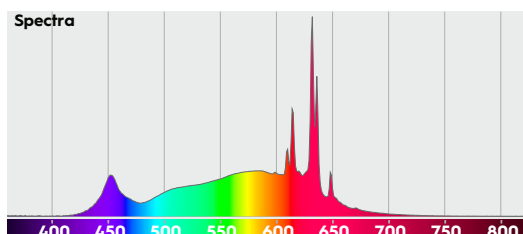
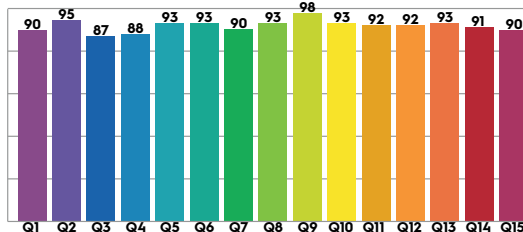
## 3000K

CRI: 95.2 (R1-R8)



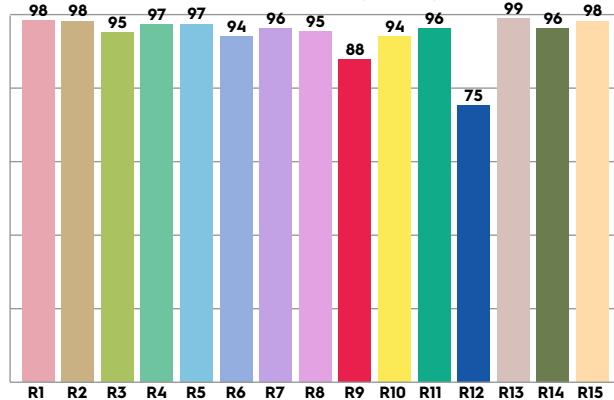
CCT	CRI	CRI R9	TM30 Rf	TM30 Rg	CQS
3166 K	95.2	73.8	91.4	101.5	91.5

CQS: 91.5



## 4000K

CRI: 96.5 (R1-R8)



CCT	CRI	CRI R9	TM30 Rf	TM30 Rg	CQS
3803 K	95.5	83.1	91.1	98.7	94.1

CQS: 93.0

